

PRIME REAL ESTATE SERVICES

1242 Bramwood Place, Longmont

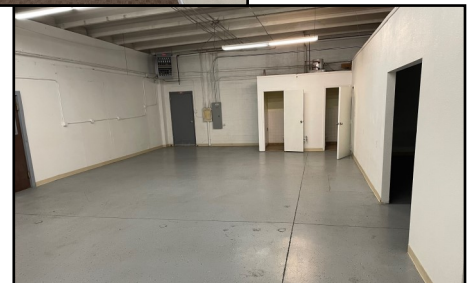


3600 SF Office/Lab and Warehouse

| | |
|------------------|----------------|
| Office/Lab Area: | 1,200 SF |
| Warehouse: | 2,400 SF |
| Clearance: | 14' |
| Overhead Door: | One 10' x 10' |
| Lease Rate: | \$12.50/SF NNN |
| NNN Expenses: | \$6.63/SF |

Ready to occupy.

Conveniently located in central Longmont, 1/2 block north of Ken Pratt Boulevard—west of Office Max



Nelson P. Miner

2919 West 17th Avenue, #204
Longmont, CO 80503
Phone: 303/682-0150
Fax: 303/682-9747
Email: npminer@aol.com



PRIME REAL ESTATE SERVICES

1242 Bramwood Place, Longmont

